



# DESIGNING + BUILDING **BETTER** VETERINARIARIES



FOUNDED  
**1985**

200 PROJECTS  
A YEAR  
**TRUSTED**

SYDNEY + MELBOURNE  
PERTH + BRISBANE  
ADELAIDE + DARWIN



QUALITY  
MANAGEMENT  
SYSTEMS


**HUMAN CENTRED DESIGN**





# Mission

---



**“At Interite Healthcare Interiors, we are committed to designing and building optimised spaces for the delivery of superior healthcare services, which in turn, deliver improved patient outcomes.”**

—  
Winston Judd, Director



1985

# Our Story

---

Interite Healthcare Interiors is a solely focused division of registered builder, Interite Corporate Interiors (100974).

Interite Healthcare Interiors combines consultancy, design, project management and construction expertise to deliver over 200 projects a year, right across Australia.

With the capability and capacity to undertake any project, whether a small specialist clinic or a large medical environment, Interite Healthcare Interiors is committed to delivering on time, on budget and to the highest quality.

# Leading Providers

“ *We exist to transform lives.*”

Kim Struthers,  
Project Executive

## Our Purpose

Interite Healthcare Interiors' expert in-house team have dedicated their combined skills, knowledge and experience to successfully service Australia's leading healthcare providers, nationwide.

We are committed to industry specialisation and to maintaining a superior standard of service for our valued clients through the delivery of quality projects.

We are especially proud of the work we do for clients in the veterinary industry and invite you to view these projects in this document.





# Veterinary

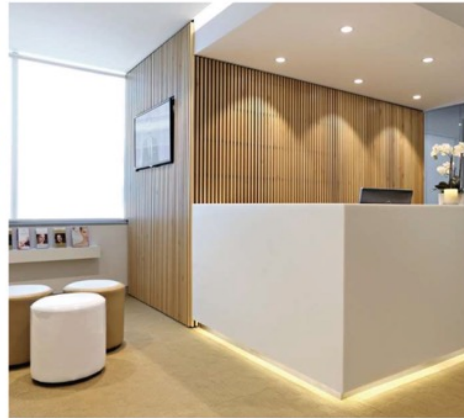
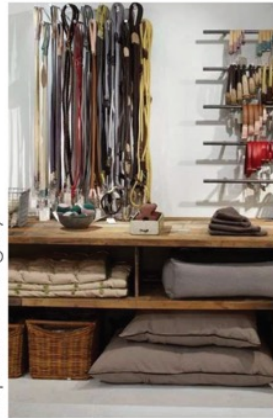
## Case Study: Grantham Vet

---



# Reception & Waiting

Inspiration Imagery



**CONSULT ROOMS:**

- Timber doors and feature signage



**WAITING:**

- Mobile furniture on castor wheels.



**WAITING:**

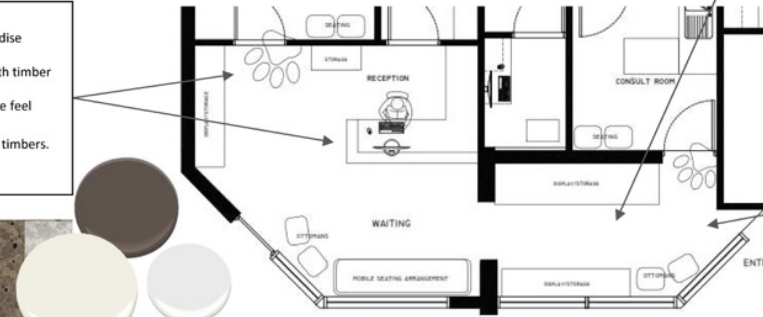
- Timber seating, lined with Artificial Turf. Mobile (on castors) to allow for relocation during puppy school.

**RECEPTION:**

- Minimal Display and storage for merchandise
- New vinyl floor with possible paw prints
- Light, neutral colour scheme balanced with timber grains for 'day spa' feel.
- Timbers add warmth and create masculine feel

**RECEPTION DESK:**

- Clean lines, simplistic design with feature timbers.
- Feature lighting.
- Signage behind reception.



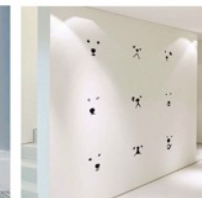
**SIGNAGE:**

- New graphics – silhouette to front glazing

Finishes Palette Inspiration



Graphics



# Consult Rooms

Inspiration Imagery



## CONSULT ROOMS:

- White walls, white cabinetry – present a fresh and clean interior.
- Add warmth to the space with timber doors and signage
- Alternative arrangement – allowing the owner to comfort their pet and assist the vet in a more comfortable environment.

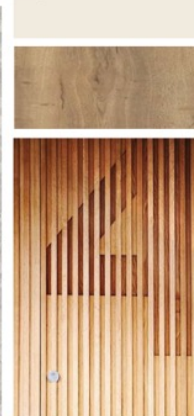
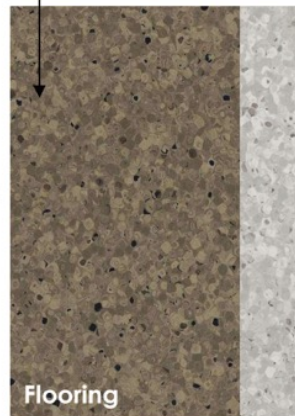
## DOOR DETAILS:

- Timber details and signage for doors.

## CONSULT ROOMS:

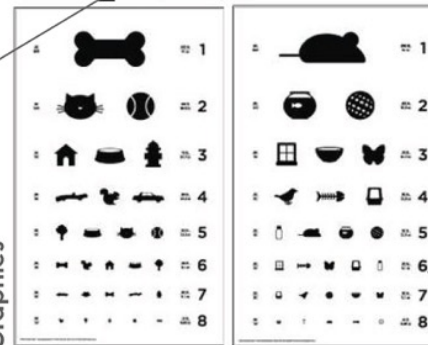
- Fresh, white walls with feature colour.
- Dark tone vinyl flooring continued into consult rooms.
- Joinery mostly white with timber introduced to add warmth and 'day spa feel'.
- Masculine, yet neutral palette.

Finishes Palette Inspiration



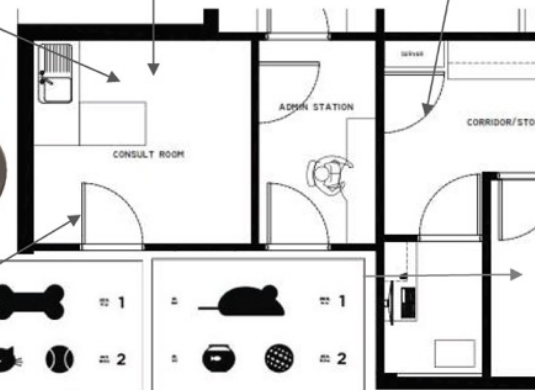
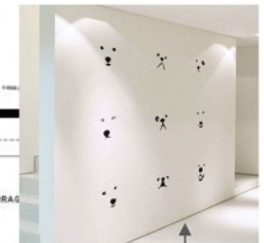
Flooring

Graphics



## GRAPHICS:

- Addition of graphics to the interior of consult rooms. Cat and Dog eye charts or 'face' graphics.





# Grooming & Courtyard

Inspiration Imagery



Graphics



Inspiration Imagery



## GROOMING:

- Fresh white walls with a balance of a deep teal. Teal features cool and calming attributes and is associated with meanings of refreshing, calming, sophisticated, serenity, adding to the day spa feel. The balance of whites, greys teal and timber relate to the remaining areas of the practice and promote wellbeing.

Finishes Palette Inspiration



GROOMING



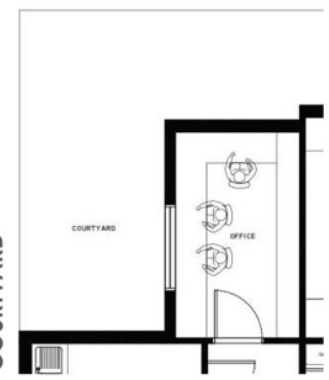
## GRAPHICS:

- Simplistic graphics can be added to the walls, joinery or glazing and are a simple yet effective visual interest to the space.

## DOOR DETAILS:

- Timber details and signage for doors.

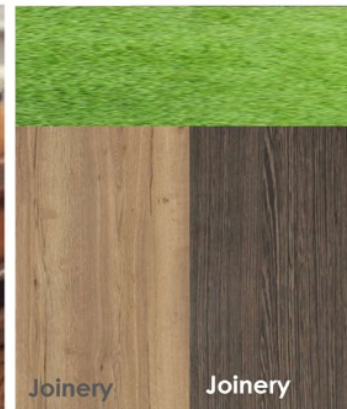
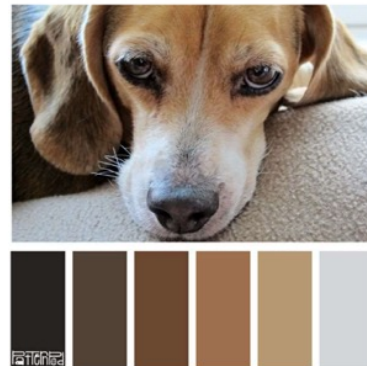
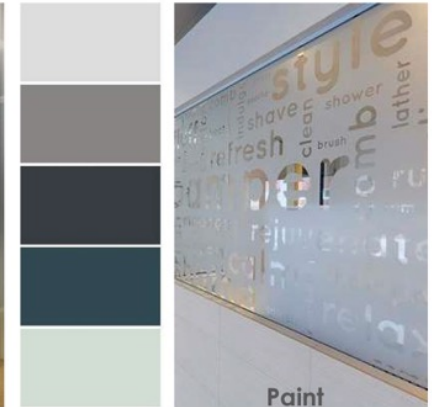
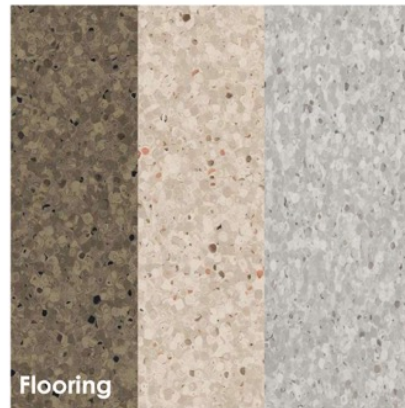
COURTYARD



## COURTYARD:

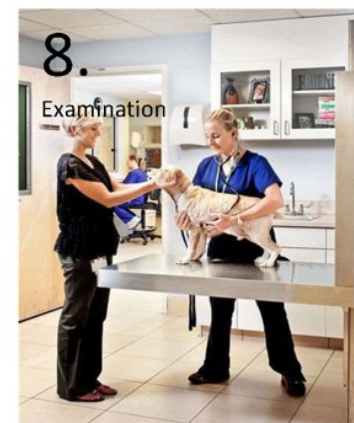
- Low maintenance exterior with mobile seating and greenery.
- Multi function use of space.

# Colours & Finishes





# Design Inspiration



# Design Inspiration





# Concept Plan



# 3D Concepts





# 3D Concepts







**STYLE AND  
SUBSTANCE**



# From Concept

---

Using the latest in 3D modelling and Virtual Reality software, Interite Healthcare Interiors can display your project outcome in photo realistic colour before a single hammer is lifted.

This service provides a sense of spatial awareness unrivalled by other means, guaranteeing your satisfaction with the completed project.

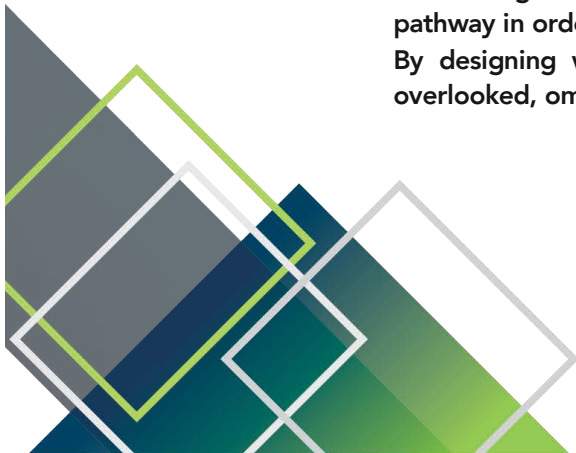
Down to the most intricate details, like conceptualising intra-office line of sight or visualising the sun projecting into your workspace, our skilled designers turn your vision into reality, right before your eyes.

## ...To Completion

With up to 70% of project costs determined in the design phase, Interite Healthcare Interiors understands the value of starting with the end in mind

Rooted in years of relevant experience, our Project Critical Path™ has been designed to ensure every corporate project follows its optimal pathway in order to achieve success.

By designing with the end in mind, we ensure nothing of value is overlooked, omitted or discarded.





**CONSULT  
DESIGN  
PROJECT  
MANAGE  
FITOUT  
+ FURNISH**



# Agile Approach

By choosing Interite Healthcare Interiors, you gain access to the combined skill of a nationally recognised architectural firm, plus the scope and pace of a large construction company.

Our Agile Approach additionally affords you even greater peace of mind through the integration of our in-house specialist Consultants and experienced Project Managers into your project process.

This collective of professional services provides an exceptional opportunity for clients wanting a smart and stress-free option. Our exhaustive service profile saves you time and ensures your project benefits from our tailored **better + faster + smarter** approach. This is a tried and tested process offering a modern and superior option to traditional staged methods.

Our all-in-one approach removes the hassle of dealing with multiple parties, creating a smoother project experience.



**BUILT TO  
REFLECT YOUR  
EXPERTISE**



# Our Reputation



# Corporate Responsibility

---

As a corporate citizen and an Australian leader in the healthcare fitout industry, maintaining the highest standards of social and environmental responsibility is at the heart of everything we do.

We believe that supporting responsible behavior throughout the entire supply chain is both a business imperative and a moral obligation.

## Insurances

---

Interite Healthcare Interiors is comprehensively insured including:

- \$50 million Public Liability
- \$50 million Product Liability
- \$50 million Workers' Compensation

## Safety

---

Interite Healthcare Interiors is proud to have a zero incident safety record over the last seven years of trading.

All staff are trained to the highest safety standards and are committed to ensuring these targets are maintained.

## Sustainability

---

Interite Healthcare Interiors is mindful of enhancing the environment in which we operate through our products and services.

So far as is practicable, we ensure our products are sourced with genuine green accreditation and our suppliers are equally dedicated to doing business in an environmentally sustainable way.

We also pride ourselves on employing the best design practice green principles and expect similar high standards from our suppliers.





# Reach Out to Us

**MELBOURNE**  
**SYDNEY**  
**BRISBANE**  
**PERTH**  
**ADELAIDE**  
**DARWIN**  
**CANBERRA**

Should you require more information on any of our services, please don't hesitate to reach out to us at one of our offices Australia wide.

1800 973 236 

[www.interitehealthcare.com.au](http://www.interitehealthcare.com.au) 





 1800 973 236  
 [www.interitehealthcare.com.au](http://www.interitehealthcare.com.au)